

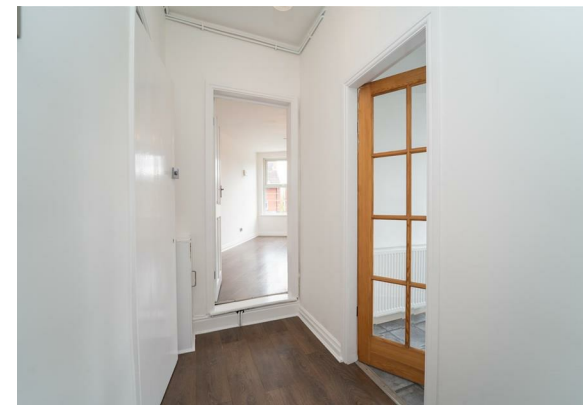
Flat 1 418 Wilbraham Road, Chorlton, Manchester, M21 0SD



Offers In The Region Of £100,000

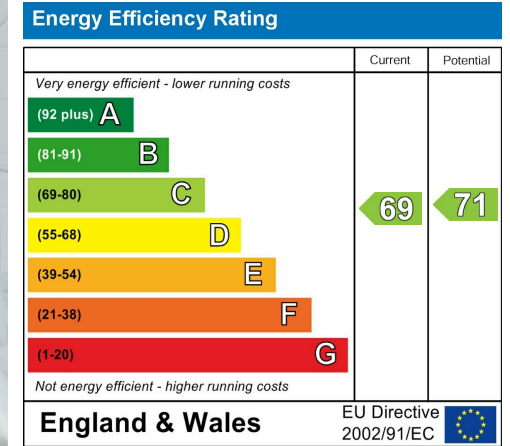
1 1 nuf c

VIDEO TOUR AVAILABLE A delightful STUDIO apartment, situated on the first floor of this period end of terrace property positioned above the North Star Delicatessen here on Wilbraham Road. Situated in a central location in Chorlton on a highly popular road. Within strolling distance to the centre of Chorlton with all its independent shops, bars, restaurants, parks and the Metrolink on Wilbraham Road, giving direct access into the City Centre and Media City. The well-planned accommodation consists of; A private entrance hall, an open plan living/bedroom space to the front aspect, a fitted kitchen/ diner, and a white three-piece shower room. The property benefits gas fired central heating with a communal boiler and off street parking to the rear. Would ideally suit a professional, a couple or an investor due to the location. OFFERED WITH NO VENDOR CHAIN. Early internal viewing is highly recommended.



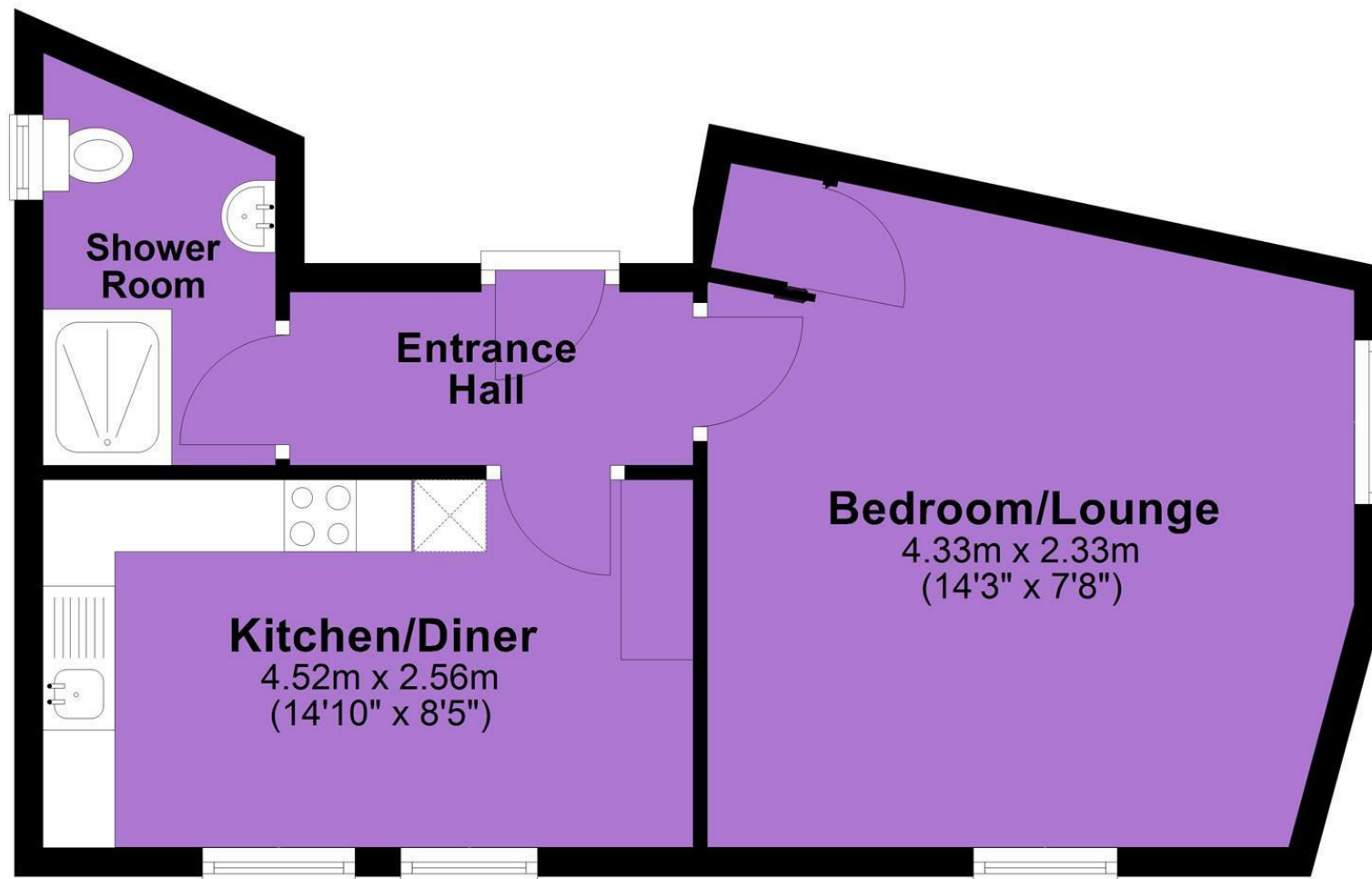


EPC Chart



Tenure: **Leasehold** Council Tax Band: **A**

First Floor



JP & Brimelow Estate Agents Ltd
 430 Barlow Moor Road, Manchester, M21 8AD
 Tel: 0161 8822233
 E: sales@jpbrimelow.co.uk www.jpandbrimelow.co.uk



JP & Brimelow
 ESTATE AGENTS

NOTICE: JP & Brimelow Estate Agents Ltd for themselves and for the vendors or lessors of this property whose agents they are give notice that:

- (i) the particulars are set out as a general outline only for the guidance of intending purchasers or lessees, and do not constitute, nor constitute part of, an offer or contract;
- (ii) all descriptions, dimensions, references to the condition and necessary permissions for use and occupation, and other details are given in good faith and are believed to be correct but any intending purchasers or tenants should not rely on them as statements or representations of fact but must satisfy themselves by inspection or otherwise as to the correctness of each of them;
- (iii) no person in the employment of JP & Brimelow Estate Agents Ltd has any authority to make or give any representation or warranty whatever in relation to this property.

jpandbrimelowestateagents

@jpandbrimelow